

Pour célébrer / Celebrating 2019-2020



**ASSEMBLÉE GÉNÉRALE ANNUELLE
ANNUAL GENERAL MEETING**

**Le mercredi 21 octobre 2020
Plateforme virtuelle Zoom
16h00**

**Wednesday, October 21, 2020
Zoom virtual platform
4:00 pm**

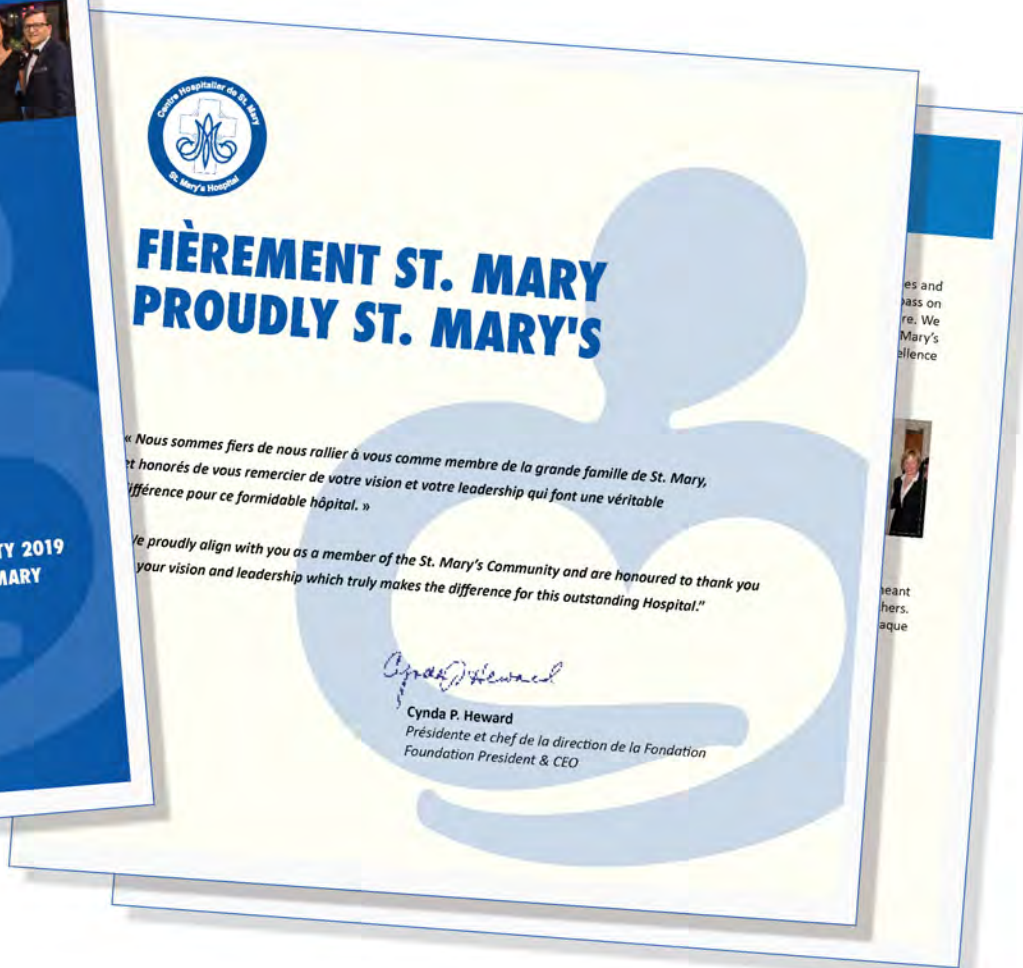
Bienvenue | Welcome

Summary of activities

Cynda P. Heward, CFRE
President & CEO
St. Mary's Hospital Foundation



St. Mary's Hospital Foundation Society Booklet



St. Mary's Hospital Foundation Nursing Legacy Project



St. Mary's Hospital Foundation 1924 Bulletin Newsletter



1924 Bulletin Newsletter

St. Mary's

Holiday Festivities

December 17th





Winner of the Longest Employee Contest!

St. Mary's head of Pharmacy, **Maureen McCormick's** name was drawn from those who correctly guessed that...



Win a CINEPLEX family pack for 4!

Guess how many years Santa and Mrs. Claus have been coming to visit St. Mary's and you could win 4 passes and popcorn to...



...More Holiday Raffles!

We have a LOT more in store to win for your holidays!...



APDP



1924 Bulletin Newsletter

ST. MARY'S STAFF

Appreciation evening!

ROYALMOUNT DRIVE-IN THURSDAY SEPTEMBER 25, 2020 6PM - 8:45PM

FREE ADMISSION LIMITED SPACE RESERVE NOW!





Have you Visited the New Coffee Shop?

Following weeks of construction, St. Mary's Auxiliary Coffee Shop reopened its doors for business on August 17th! Come and check out the newly...



Renovations in Progress!

Our Hospital was built in 1934 and as such, we need to periodically undergo renovations & upgrades and have embarked on several projects to modernize...



A Moment with Doctor Stu

As we all wait to see where the COVID freight train is headed next, we long to come together, yet have to stay apart. By distance or by masks, we are separated...



APDP and Style Your Smile

Through "Style Your Smile" we were delighted to offer colourful masks to our St. Mary's colleagues and fellow staff members - an expression of connection and...




St. Mary's is in Their Blood

When Wendy recently contacted the Foundation office, we discovered the Murphy family has quite a history with our Hospital! Wendy and all 4 of her...




Drive-In Contest Winners!


Congratulations to the lucky St. Mary's staff who won passes to the comedy shows at the Royal Mount Drive-In on July 24th and 25th...



1924 Bulletin Newsletter


PROUDLY ST. MARY'S.






Coffee Shop Makeover

The coffee shop will be going through a complete overhaul as we are redoing not only the eating area but also all of the workstations, counters and floors. We are also...




"We are so proud of all of you."

Our Board of Governors wants you to know that your heartfelt commitment to St. Mary's is recognized and admired. "We could never have imagined a time like this and the..."




A moment with Doctor Stu

We've been given the opportunity to discover new ways to connect and to support each other. Now more than ever, we see the value of community...




Your Community to the Rescue!

St. Mary's has experienced a true outpouring of support during the COVID-19 pandemic; corporations to mask-makers and skin care products! Follow us here to find out more...



What Does 'Dad' Mean to You?

Find out how you can support St. Mary's Dads on this Father's Day - June 21st. If you give, choose how your donation will impact healthcare from birth, through life to senior care with dignity....



Summer Edition Staff Contest!

Decode the mystery sentence and submit your answer and you could be one of six lucky winners in our draw for...

St. Mary's Hospital Foundation Hospital Elevator Doors



FIÈREMENT ST. MARY. PROUDLY ST. MARY'S.

St. Mary's Hospital Foundation Friends of St. Mary's 2019 Golf Tournament



Took place September 11th, 2019 and raised \$3,937 which facilitated in the creation of 5 bursaries for psychiatry nurses at St. Mary's.

Left to right
Kathleen Raphael, Saada Rashed, Jocelyn Paul,
Caroline Emblem, Esperance Gasherebuka,
Dr. Santokh Singh, Cynda Heward



The 23rd Annual Gayle Hutchison Charity Golf Tournament
September 7th, 2019
Raised \$12,725 in support of Community Cancer Care



An ambitious brother-sister duo
16-year-old Stylianos and 14-year-old Evaggelia Evangelinaras



They hosted a lemonade stand throughout the summer of 2019 which raised \$277.80 and just recently this past

September 19th created a golf ball whacking contest to drive as many balls as possible a distance of 50 yards or more within one hour.

The results?

Evaggelia drove 142 balls while Stylianos drove 137, and together they raised over \$2,000 for Cancer Care at St. Mary's.



St. Mary's Hospital Foundation Special Donations

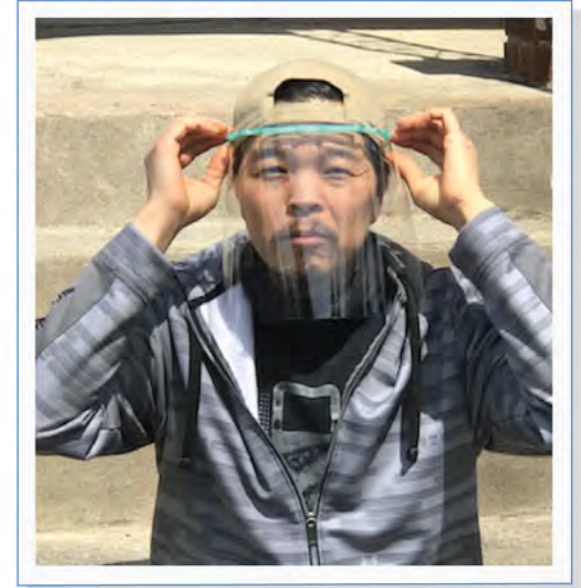
Cong-Thanh Duon
\$15,000 donation



Don Fehr
Mask donation



David
Shield donation



25th St. Mary's Masters, June 10, 2019
Chairman Stacey Hoirch
Raised \$459,112
for renovation and expansion of our
5th floor in-patient and palliative care facilities

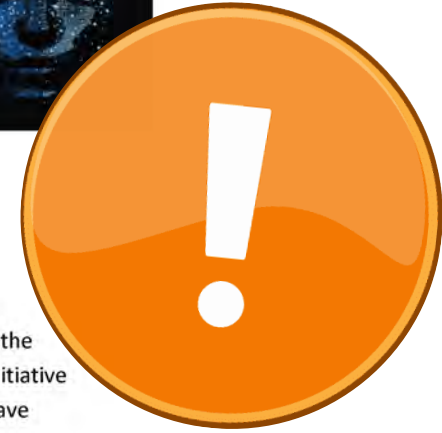




Hello Wonderball v6 Committee!

It is our turn to give back to YOU.

On Friday September 25th, St. Mary's Hospital Foundation and Executive Board proudly invite you to join us at the Royalmount Drive-In Event Theatre in honor of the Wonderball! This incredible (COVID-19 secured) Drive-In initiative is **NOT** a replacement event, but an opportunity to convey our heartfelt appreciation to you and yours, who have supported and brought the Wonderball to the success it is today!





ST. MARY'S YPG IS PUTTING OUR HOSPITAL
AT THE FOREFRONT WITH STATE-OF-THE-ART TECHNOLOGY.

YOUR GENEROUS CONTRIBUTION WILL BE APPLIED TO THE NEW
SOMATOM EDGE CT SCANNER



REDUCED RADIATION DOSES.
HIGH IMAGE QUALITY.
QUICK SCANS.
FAST DIAGNOSIS.

CARE VIGER
WONDERBALL v6
APRIL 17, 2020

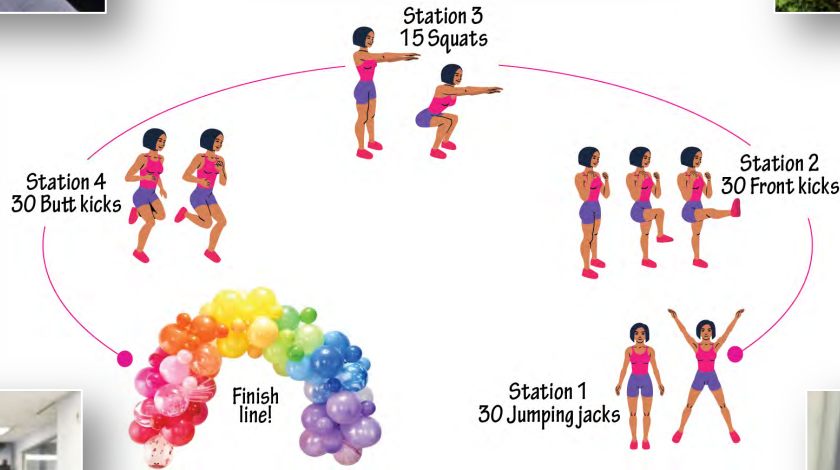
**Girls for the Cure - 25th edition!
September 24, 2019
Raised \$121,773
for Women-Related Cancers**





Le 24 septembre | September 24

GIRLS FOR THE CURE 2020 UN PAS VERS LA GUERISON



82nd St. Mary's Ball, November 1, 2019
Co-Presidents Anne-Marie Boucher & Mitch Garber
Raised \$1,012,340
to support patient-centered care,
research and teaching



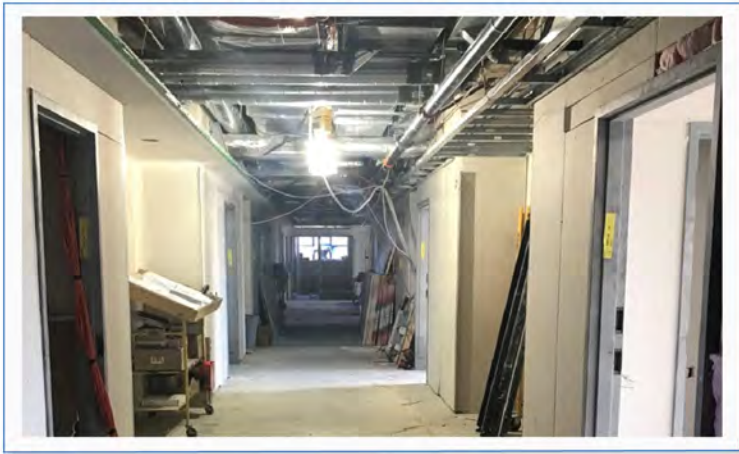
1st Floor Residents Lounge



2nd Floor Day Surgery Waiting Room



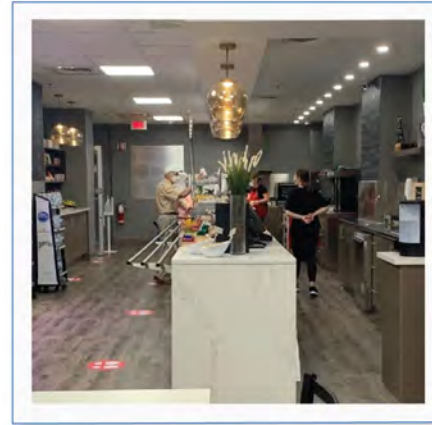
5th Floor In-Patient Cancer Care and Palliative Care Facilities



8th Floor Nurses Lounge



St. Mary's Hospital Foundation Auxiliary Coffee Shop





Merci de tout coeur
Heartfelt thanks